



# InterCOM DDS™

## High Performance Real-Time Middleware

To reduce the effort needed to integrate distributed real-time systems, InterCOM DDS provides an open-standard middleware for high performance data distribution.

### Data Distribution Service

This easy-to-use software allows developers to quickly define and share real-time data across systems, networks, platforms and processors. The API is available in multiple languages and platforms and includes the following capabilities:

- High-reliability publish/subscribe API
- Detailed quality of service controls
- Easy-to-use debug tools
- Complete reference solutions
- Intuitive training tutorials
- Complete documentation

Fifteen years of research and development have been used to create the high-reliability publish and subscribe back-bone that has been deployed in operational systems around the world.

This optimized backbone with detailed quality of service controls allows developers to maximize the available network resources and easily integrate complex distributed systems.

### Publish and Subscribe

As opposed to traditional client and server models, the publish and

subscribe model facilitates better data distribution from sensors to many subscribers.

### Quality of Service

Quality of Service (QoS) policies are used to control data flows and manage system performance. You can use policies to prioritize data delivery and error handling to optimize system resource usage.

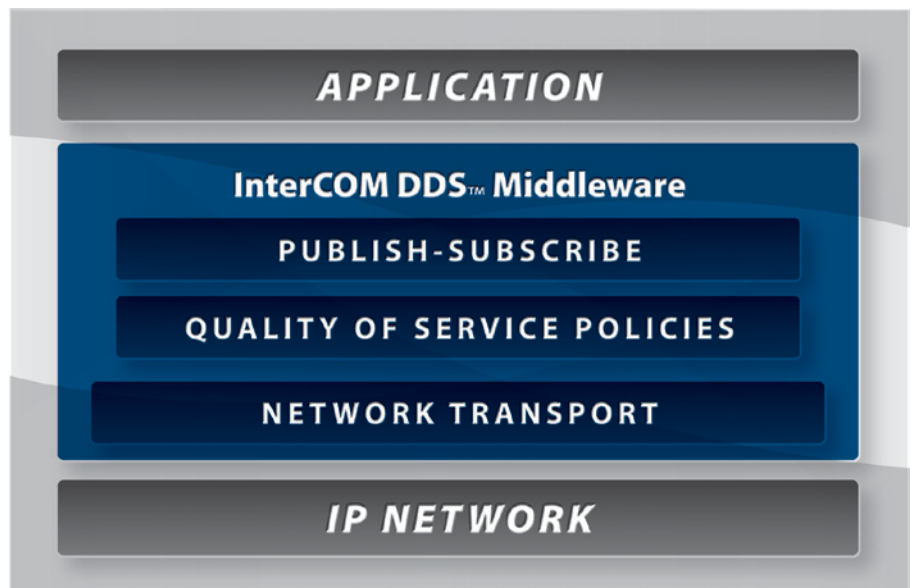
Policies can be divided into custom categories for refined control.

The categories can include:

- Volatility
- Transport timeliness
- Transport integrity
- Entity configuration
- Entity metadata

### View Tool

The view tool allows developers and integrators to view the network traffic and inject test messages.

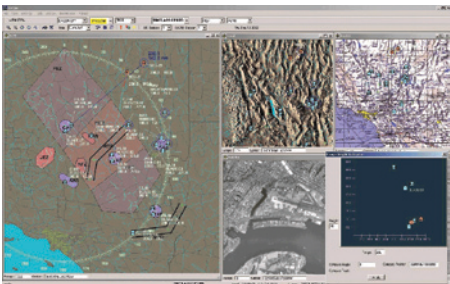


# Features

<b>Multi Platform Support</b>	Obtain an SDK for any of the following platforms: Windows, Linux & Solaris.
<b>Multi Language Support</b>	Obtain an API for both C++ and Java.
<b>High Performance Engine</b>	Ensure reliable, high performance data delivery
<b>Open-Standard Interface</b>	Open-standard Data Distribution Service API managed by OMG can reduce development cost
<b>Communication Middleware</b>	Easily define, send, marshal and de marshal data across different platforms and languages.
<b>Publish and Subscribe</b>	Anonymous publish and subscribe communication model makes system integration easier
<b>Quality of Service</b>	Maximize network resources and behavior by customizing QOS policies to your needs.
<b>Object Oriented API</b>	Easily integrate the API into your software architecture.
<b>Training</b>	Custom five-day training course that focuses on your key implementation issues.
<b>Support</b>	Direct access to engineering team for problem resolution and questions.



**InterCOM DDS** is part of the **InterWORX** suite of high-performance development tools for mission-critical systems, which also includes **InterMAPhics**.



**InterMAPhics** is our purpose built, high performance geospatial SDK for mission critical systems.

## Company Facts

Gallium, a wholly owned subsidiary of Kongsberg Defense & Aerospace, is the international leader in the development of COTS software components and tools for mission critical systems. Gallium's software is used by military and civilian agencies worldwide to provide Command and Control, situational awareness, missile defense, air traffic control and other high performance display applications.

Gallium also provides the **I-SIM** Air Traffic Control simulator. **I-SIM** is a comprehensive, integrated software suite that meets all the high-fidelity simulation requirements for ATC training, testing and research.

Gallium has more than two decades of software-engineering experience and is ISO 9001-certified

**InterWORX**  
PRODUCT SUITE

Find out more – Contact Gallium today

info@gallium.com

www.gallium.com

1 800 267-2626

**Gallium**